

PRICE INFORMATION SCHEDULES**SCHEDULE 1: PRICE SUMMARY AND TERMS OF PAYMENT**

Tenderers shall set out in this Schedule:

1. **Price Summary** including the breakdown of the overall Tender Price stated in the Tender Form and any other terms of payment. The breakdown shall be detailed in the following format according to the summary of items and quantities required in the Tender. The price shall include any labour charges, custom tax and withholding tax.
2. Payment will be made locally and in Brunei Dollars. Payment shall be made in accordance with the provisions in the Contract.

ITEM	DESCRIPTION	SIZE	QTY	UNIT PRICE B\$	TOTAL PRICE B\$
1	SHOES SERVICE HIGH GLOSS WHITE	6.5	200 PRS		
2	SHOES SERVICE HIGH GLOSS WHITE	7	200 PRS		
3	SHOES SERVICE HIGH GLOSS WHITE	7.5	200 PRS		
4	SHOES SERVICE HIGH GLOSS WHITE	8	200 PRS		
5	SHOES SERVICE HIGH GLOSS WHITE	8.5	200 PRS		
6	SHOES SERVICE HIGH GLOSS WHITE	9	200 PRS		
7	SHOES SERVICE HIGH GLOSS WHITE	9.5	200 PRS		
8	SHOES SERVICE HIGH GLOSS WHITE	10	100 PRS		
9	SHOES SERVICE HIGH GLOSS WHITE	10.5	100 PRS		
10	SHOES SERVICE HIGH GLOSS WHITE	11	50 PRS		
11	SHOES SERVICE HIGH GLOSS WHITE	11.5	50 PRS		
12	SHOES SERVICE HIGH GLOSS WHITE	12	50 PRS		
GRAND TOTAL (B\$)					

SHOES SERVICE HIGH GLOSS WHITE

Specification

Colour: Offwhite

Closure type: lace-up

Shoe type: Derby shoes (closed lacing)

Outer Material: synthetic + leather (shiny)

Inner Material: Soft faux leather

Sizes measured in: UK



Stitched down



Lace type: waxed cotton lace
Colour: offwhite

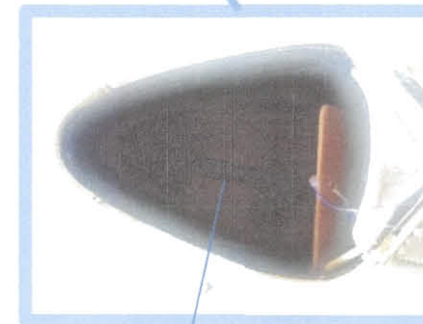
Eyelet count: 10 (5 left side
and 5 right side)



Heel type: Flat, goodyear welted (hard rubber)
Specs: Oil resistant, non marking & non slip
Colour: Black



INSOLE



Dri-lex insole