

PRICE INFORMATION SCHEDULES

SCHEDULE 1: PRICE SUMMARY AND TERMS OF PAYMENT

Tenderers shall set out in this Schedule:

1. **Price Summary** including the breakdown of the overall Tender Price stated in the Tender Form and any other terms of payment. The breakdown shall be detailed in the following format according to the summary of items and quantities required in the Tender. The price shall include any labour charges, custom tax and with holding tax.
2. Payment will be made locally and in Brunei Dollars. Payment shall be made in accordance with the provisions in the Contract.

| ITEM | DESCRIPTION | QTY | UNIT PRICE B\$ | TOTAL PRICE B\$ |
|--------------------------|--|-------------|-------------------|--------------------|
| 1 | DENTAL SUITE WITH CABINETRY AND VINYL FLOORING FOR LARGE SURGERIES 1 AND 2, NEW PENANJONG DENTAL CENTRE | 02 UNITS | | |
| 2 | DENTAL SUITE WITH CABINETRY AND VINYL FLOORING FOR MEDIUM SURGERIES 3 AND 4, NEW PENANJONG DENTAL CENTRE | 02 UNITS | | |
| GRAND TOTAL (B\$) | | | | |

NOTE:

- Specification as per **ANNEX A**.
- The Government reserves the right to give **PARTIAL AWARD**.
- The Government may accept the whole or any item(s) of tender.
- The Price quotes need to be maintained in items of partial award.
- **SPECIFICATIONS AND CATALOGUE MUST BE SUBMITTED AND CLEARLY LABELED.**
- For further inquiry and site visit please contact Lt Hafizh Abd Khalid at +6738620851 or Md Khalid bin Hj Ahmad Kamil at +6738629225



ANNEX A

| Dental Equipment | |
|-------------------|---|
| Demand Reference | DSE/08/25/01 |
| Description | Dental Suite with Cabinetry and Vinyl flooring for LARGE surgeries 1 and 2, New Penanjong Dental Centre |
| Quantity Required | 2 UNITS |

| Ser | Technical Data & Dimensional | | Offer Model/Brand |
|------------------|---|--|-------------------|
| | Item | Specification | |
| (a) | (b) | (c) | (d) |
| Essential | | | |
| 1 | General | Dental Suite to be install in Surgery 1 and 2 of Penanjong Dental Centre | |
| 2 | Features and Benefits | Dental unit with unit-integrated chair, instrument console with keyboard and foot control. Chair has lifting mechanism allowing free space under the chair. Multifunctional foot control to control chair, unit and instrument functions. Supports up to 185kg of patients weight. | |
| 3 | Cabinetry | Top material: - Corian Panels: - Corrosive resistant Drawers: - heavy duty slides, soft close | |
| 4 | Dental Chair Specifications for Each System: | | |
| | Power requirements | 220-240 VAC | |
| | Mains frequency | 50 Hz | |
| | Water inlet pressure | 300-900 kPa (43-130 psi) | |
| | Air inlet pressure | 550-900 kPa (80-130 psi) | |
| | Mounting | Floor Mounted | |
| | Frame | Cast aluminium alloy | |
| | Delivery system | Over-the-patient delivery with hanging tube instruments (TM table) | |
| | Hygiene & Maintenance | Integrated hygiene center with automated rinsing programs (DEKAmat, OXYmat) tool rinsing, and suction line cleaning/disinfection. Disposal system using Durr amalgam separator. | |
| | Dentist Element (For Surgery 1) | 2 x Highspeed handpiece 1 x Micro motor handpiece 1 x 3 functions handpiece 1 x Scaler handpiece (1 x Spare Scaler handpiece included, 3x Scaler tips with different sizes) 1 x Intraoral HD Camera 1 x Surgical module, surgical motor with handpiece and integrated saline pump. 1 x Intraoral X-ray unit on the light mounting pole 1 x Holder for waste receiver (Kavo Service Box) | |



| | | |
|------------------------------------|---|--|
| Dentist Element (For Surgery 2) | <p>2 x Highspeed handpiece 1 x Micro motor handpiece 1 x 3 functions handpiece 1 x Scaler handpiece (1 x Spare Scaler handpiece included, 3x Scaler tips with different sizes) 1 x Intraoral HD Camera 1 x Intraoral X-ray unit on the light mounting pole 1 x Holder for waste receiver (Kavo Service Box)</p> | |
| Asistant Element | <p>1 x 3 functions handpiece 1 x Lightcure handpiece; Setelec Mini LED 1 x Suction hose 1 x Saliva Ejection hose</p> | |
| Display & User Interface | <p>High-resolution touch display: a 12 inches widescreen (TM-table) featuring customizable widgets and fast responsive. High-resolution screens 22 inches for viewing X-Ray images and patients data. Aspect ratio: 16 : 9 Two digital inputs for microscope and PC.</p> | |
| Diagnostics & Coomunication | <p>Require PC base software, combines patient management software, 2D X-Ray archive and intraoral live image display into a seamless system. Enables automatic image transfer and allows image display and comparison directly on the treatment unit screen. Image editing features such as cropping screenshots, adjusting contrast/brightness, zooming directly within the workflow. Automatic backups of data at predefined intervals for added security. Plug-and-play integration, recognizing hardware automatically and simplifying updates for the intraoral HD camera.</p> | |
| Foot control | <p>The foot control controls all necessary functions, keeping user hands free and minimising cross-contamination.</p> | |
| Inspection light | <p>LED construction – for long lifespan Innovative COMPOsave mode with variable light intensity from approx. 8,000 to 15,000 lux (compatible with light-activated restoration materials) filters out all blue components of the lights, slowing down the hardening of the filling material. No conveyed shadows Silent LED technology On/off switching and intensity adjustment from GUI, foot control, light head or by waving the hand Colour temperature: appr. 5000 K Light intensity: appr. 35 000 LUX</p> | |



| | | | |
|----------|---------------------------------|--|--|
| | | Maximum power consumption: 5 W Illumination field at a distance of 700 mm | |
| | Medical grade monitor | Medical grade display on Inspection light pole Full HD resolution (medical grade quality) Equipped with HDMI inputs | |
| | Stool | 1 x Dentist stool 1 x Assistant Stool with arm rest | |
| | Software | Compatible with existing Romexis software application. Can store and view patients data and X-ray image directly to the romexis software. Supports romexis application to troubleshoot the dental chair. | |
| | Upholstery color | To be confirmed by user. Include footrest protector. | |
| 5 | Cabinetry Specifications | | |
| | Technical data | Layout Identical to the existing. 135° corner module, 2 x sinks with foot actuator and waste bin. Storage Drawer module Instrument storage module Attached sketch drawing of the existing cabinetry for reference only Supplier to check specification, measurement and requirement on site. | |
| | Items to be included | Inner layout tray for drawers Foot actuators for water taps Build in power socket for amalgam mixer unit | |
| | Requirement | Supplier to check and measure the existing cabinetry at site in order to supply the new cabinetry with identical setup Supplier to remove the existing cabinetry before installing the new cabinetry All walls in surgery to be repainted with anti bacterial paint and color to be confirmed by user Floor finishes to be made good after installation Color of panels to be selected by user | |
| 6 | Vinyl Flooring | | |
| | Type of floor covering | Medical Grade Homogeneous vinyl flooring | |
| | Classification - industrial | Class 43 | |
| | Total thickness | 2.0 mm | |
| | Wear layer thickness | 2.0 mm | |
| | Effect of castor chair | Suitable | |
| | Installation | Complete with waterproofing and self leveling, coving up to 34 sqm along wall and cabinetry Color and pattern to be agreed by user All walls in surgery to be repainted with anti bacterial paint and color to be confirmed by user Floor finishes to be made good after installation | |
| 7 | Installation | No extra charges for the following needs; | |



| | | | |
|----|--|--|--|
| | | <ul style="list-style-type: none"> ➤ All conceal plumbing and electrical work to be completed before vinyl flooring ➤ Surgery walls to be made good and repainted with anti-bacteria paint. Color to be confirmed by user. | |
| 8 | Commissioning | <ul style="list-style-type: none"> ➤ Commissioning with relevant documents ➤ On-Site Demo/Training for Operators and Technical Staff. ➤ No limit of breakdown calls within warranty period. | |
| 9 | Approved Agent Status | <p>It is essential that the contractor/supplier submit a letter from the manufacturer stating that they:</p> <ul style="list-style-type: none"> ➤ Manufacturers authorized the supplier of the equipment. ➤ Are authorized by the manufacturer to install test and commission their equipment. | |
| 10 | Technical Specification | Require Kavo authorized and Kavo certified technical preventative and corrective maintenance training. (All costs inclusive) | |
| 11 | Warranty | It is essential that the manufacturer provided a minimum of 1 year warranty support (parts and labor) from the date of acceptance into service. | |
| 12 | Technical Service Manual | The Supplier Shall provide during commissioning period a complete set of Technical Service manuals to assist in the conduct of routine maintenance procedures and fault finding techniques. | |
| 13 | Equipment Whole-Life Support | It is essential that the contractor/supplier submit a letter from the manufacturer guaranteeing that spare parts will continue to be supplied for at least 10 years which is the envisaged in-service life of the equipment. | |
| | | | |
| 14 | Preferred Model/Brand & Country Origin of The Manufacturer | <p>Dental Suite: Kavo uniQa or Equivalent</p> <p>Cabinetry: Kavo Domino, Saratoga, Dental Art or Equivalent</p> <p>Vinyl Flooring: Tarkett, Armstrong or Equivalent</p> | |

***Important Notice**

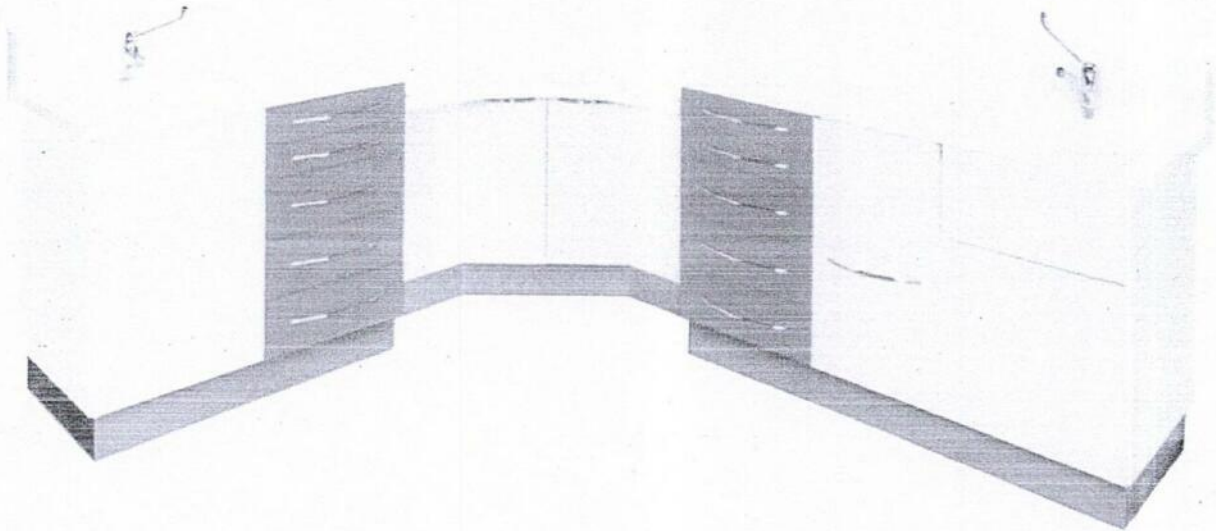
This specification annex form must be complete and attached with the quotation tenders provided.

Company / Supplier Chop & Signature,



.....

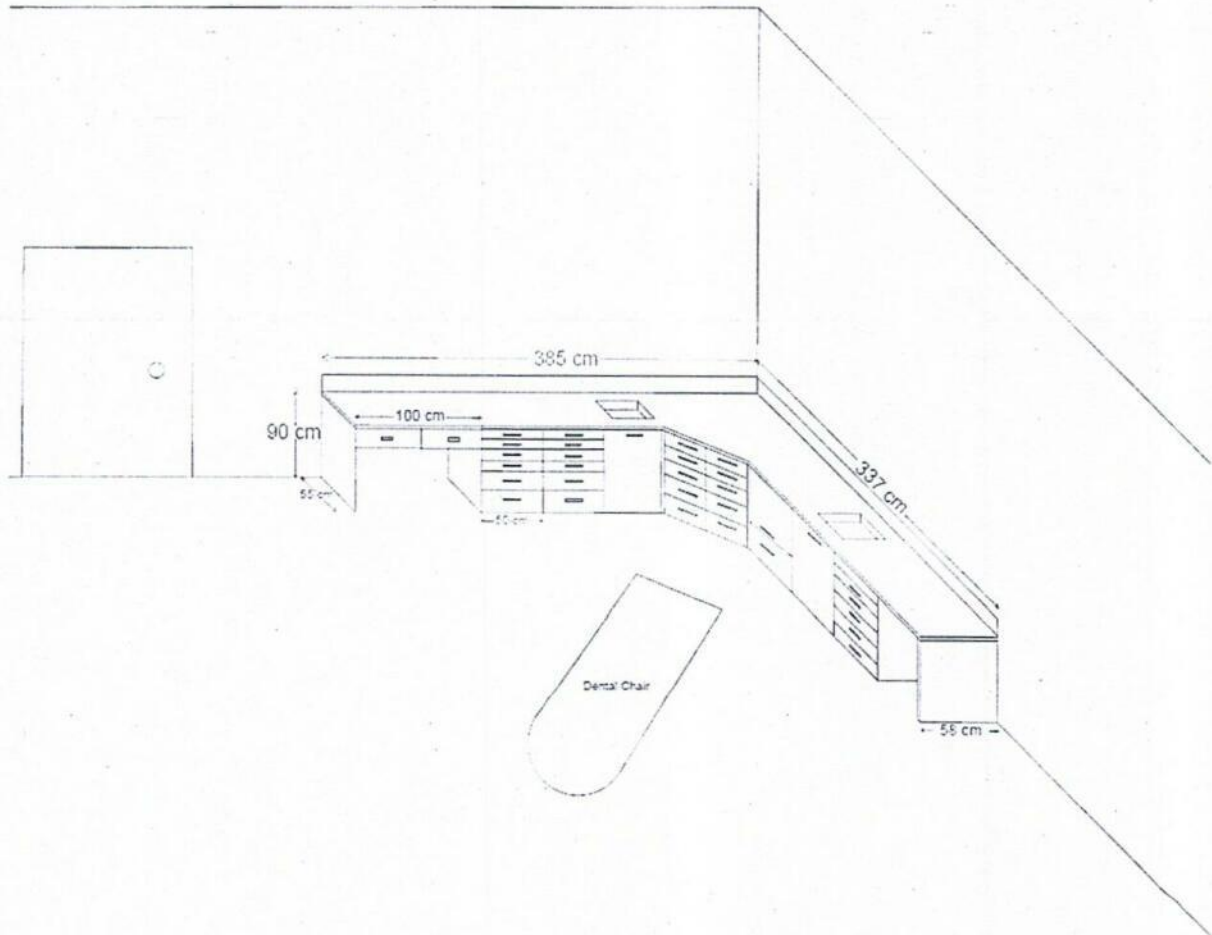




Picture is for illustration and reference only, Supplier to check module and to measure on site

| | |
|---|--|
| Dental Equipment | |
| Dental Services RBAF Demand Reference | |
| Description | Dental Suite with Cabinetry and Vinyl flooring for LARGE surgeries 1 and 2, New Penanjong Dental Centre |
| Quantity Required | 2 Sets |
| Preferred Model/Brand & Country Origin of The Manufacturer | Dental Suite: Kavo uniQa or Equivalent Cabinetry: KaVo Domino, Saratoga, Dental Art or Equivalent Medical Grade Homogeneous vinyl flooring: Tarkett, Armstrong or equivalent |
| Submitting Catalogue / Brochures | The Supplier must submit Catalogue / Brochures for the offered item together with tender document. |





DENTAL PENANJONG SURGERY 1 and SURGERY 2



| Dental Equipment | |
|-------------------|--|
| Demand Reference | DSE/08/25/02 |
| Description | Dental Suite with Cabinetry and Vinyl flooring for medium surgeries 3 and 4, New Penanjong Dental Centre |
| Quantity Required | 2 UNITS |

| Ser | Technical Data & Dimensional | | Offer Model/Brand |
|------------------|---|--|-------------------|
| | Item | Specification | |
| (a) | (b) | (c) | (d) |
| Essential | | | |
| 1 | General | Dental Suite to be install in Surgery 3 and 4 of Penanjong Dental Centre | |
| 2 | Features and Benefits | Dental unit with unit-integrated chair, instrument console with keyboard and foot control. Chair has lifting mechanism allowing free space under the chair. Multifunctional foot control to control chair, unit and instrument functions. Supports up to 185kg of patients weight. | |
| 3 | Cabinetry | Top material: - Corian Panels: - Corrosive resistant Drawers: - heavy duty slides, soft close | |
| 4 | Dental Chair Specifications for Each System: | | |
| | Power requirements | 220-240 VAC | |
| | Mains frequency | 50 Hz | |
| | Water inlet pressure | 300-900 kPa (43-130 psi) | |
| | Air inlet pressure | 550-900 kPa (80-130 psi) | |
| | Mounting | Floor Mounted | |
| | Frame | Cast aluminium alloy | |
| | Delivery system | Over-the-patient delivery with hanging tube instruments (TM table) | |
| | Hygiene & Maintenance | Integrated hygiene center with automated rinsing programs (DEKAMat, OXYmat) tool rinsing, and suction line cleaning/disinfection. Disposal system using Durr amalgam separator. | |
| | Dentist Element | 2 x Highspeed handpiece 1 x Micro motor handpiece 1 x 3 functions handpiece 1 x Scaler handpiece (1 x Spare Scaler handpiece included, 3x Scaler tips with different sizes) 1x Holder for waste receiver (Kavo Service Box) | |
| | Asistant Element | 1 x 3 functions handpiece 1 x Lightcure handpiece; Setelec Mini LED 1 x Suction hose 1 x Saliva Ejation hose | |



| | | |
|--------------------------|--|--|
| Display & User Interface | High-resolution touch display: a 12 inches widescreen (TM-table) featuring customizable widgets and fast responsive. High-resolution screens 22 inches for viewing X-Ray images and patients data. Aspect ratio: 16 : 9 Two digital inputs for microscope and PC. | |
| Foot control | The foot control controls all necessary functions, keeping user hands free and minimising cross-contamination. | |
| Inspection light | LED construction – for long lifespan Innovative COMPOsave mode with variable light intensity from approx. 8,000 to 15,000 lux (compatible with light-activated restoration materials) filters out all blue components of the lights, slowing down the hardening of the filling material. No conveyed shadows Silent LED technology On/off switching and intensity adjustment from GUI, foot control, light head or by waving the hand Colour temperature: appr. 5000 K Light intensity: appr. 35 000 LUX Maximum power consumption: 5 W Illumination field at a distance of 700 mm | |
| Medical grade monitor | Medical grade display on Inspection light pole Full HD resolution (medical grade quality) Equipped with HDMI inputs | |
| Software | Compatible with Romexis software application. Support romexis application to troubleshoot the dental chair. To be control using romexis application system. | |
| Stool | 1 x Dentist stool 1 x Assistant Stool with arm rest | |
| Upholstery color | To be confirmed by user. Include footrest protector. | |
| 5 | Cabinetry Specifications | |
| Technical data | Layout Identical to the existing. 135° corner module, 2 x sinks with foot actuator and waste bin. Storage Drawer module Instrument storage module Attached sketch drawing of the existing cabinetry for reference only Supplier to check specification, measurement and requirement on site. | |
| Items to be included | Inner layout tray for drawers Foot actuators for water taps Build in power socket for amalgam mixer unit | |



| | | | |
|----|--------------------------------|--|--|
| | Requirement | Supplier to install New Corian top only using EXISTING cabinetry at Surgery 5 Penanjong Centre. Supplier to check and measure the existing cabinetry at site in order to supply the new cabinetry with identical setup. All walls in surgery to be repainted with anti bacterial paint and color to be confirmed by user Floor finishes to be made good after installation Color of panels to be selected by user | |
| 6 | Vinyl Flooring | | |
| | Type of floor covering | Medical Grade Homogeneous vinyl flooring | |
| | Classification - industrial | Class 43 | |
| | Total thickness | 2.0 mm | |
| | Wear layer thickness | 2.0 mm | |
| | Effect of castor chair | Suitable | |
| | Installation | Complete with waterproofing and self leveling, coving up to 24 sqm along wall and cabinetry. Color and pattern to be agreed by user All walls in surgery to be repainted with anti bacterial paint and color to be confirmed by user Floor finishes to be made good after installation | |
| 7 | Installation | No extra charges for the following needs; <ul style="list-style-type: none"> ➤ All conseal plumbing and electrical work to be completed before vinyl flooring ➤ Surgery walls to be make good and repaint with anti-bacteria paint. Color to be confirmed by user. ➤ | |
| 8 | Commissioning | <ul style="list-style-type: none"> ➤ Commissioning with relevant documents ➤ On-Site Demo/Training for Operators and Technical Staff. ➤ No limit of breakdown calls within warrenty period. ➤ | |
| 9 | Approved Agent Status | It is essential that the contractor/supplier submit a letter from the manufacturer stating that they: <ul style="list-style-type: none"> ➤ Manufacturers authorized the supplier of the equipment. ➤ Are authorized by the manufacturer to install test and commission their equipment. ➤ | |
| 10 | Technical Specification | Require Kavo authorized and Kavo certified technical preventative and corrective maintenance training. (All costs inclusive) | |
| 11 | Warranty | It is essential that the manufacturer provided a minimum of 1 year warranty support (parts and labor) from the date of acceptance into service. | |
| 12 | Technical Service | The Supplier Shall provide during commissioning | |



| | | | |
|-----------|---|--|--|
| | Manual | period a complete set of Technical Service manuals to assist in the conduct of routine maintenance procedures and fault finding techniques. | |
| 13 | Equipment Whole-Life Support | It is essential that the contractor/supplier submit a letter from the manufacturer guaranteeing that spare parts will continue to be supplied for at least 10 years which is the envisaged in-service life of the equipment. | |
| | | | |
| 14 | Preferred Model/Brand & Country Origin of The Manufacturer | Dental Suite: Kavo uniQa or Equivalent Cabinetry: Kavo Domino, Saratoga, Dental Art or Equivalent Vinyl Flooring: Tarkett, Armstrong or Equivalent | |

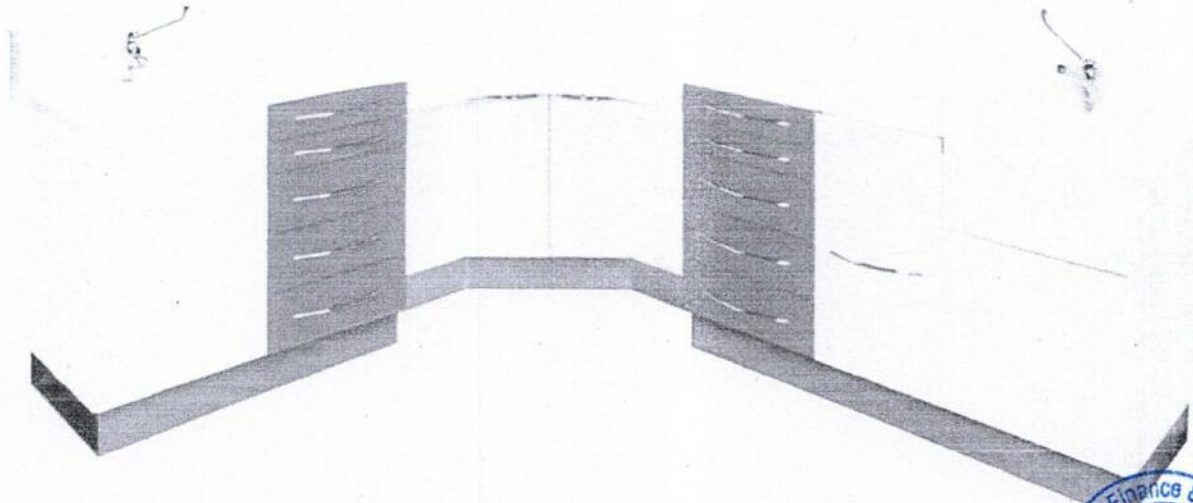
***Important Notice**

This specification annex form must complete and attached with the quotation tenders provided.

Company / Supplier Chop & Signature,

.....

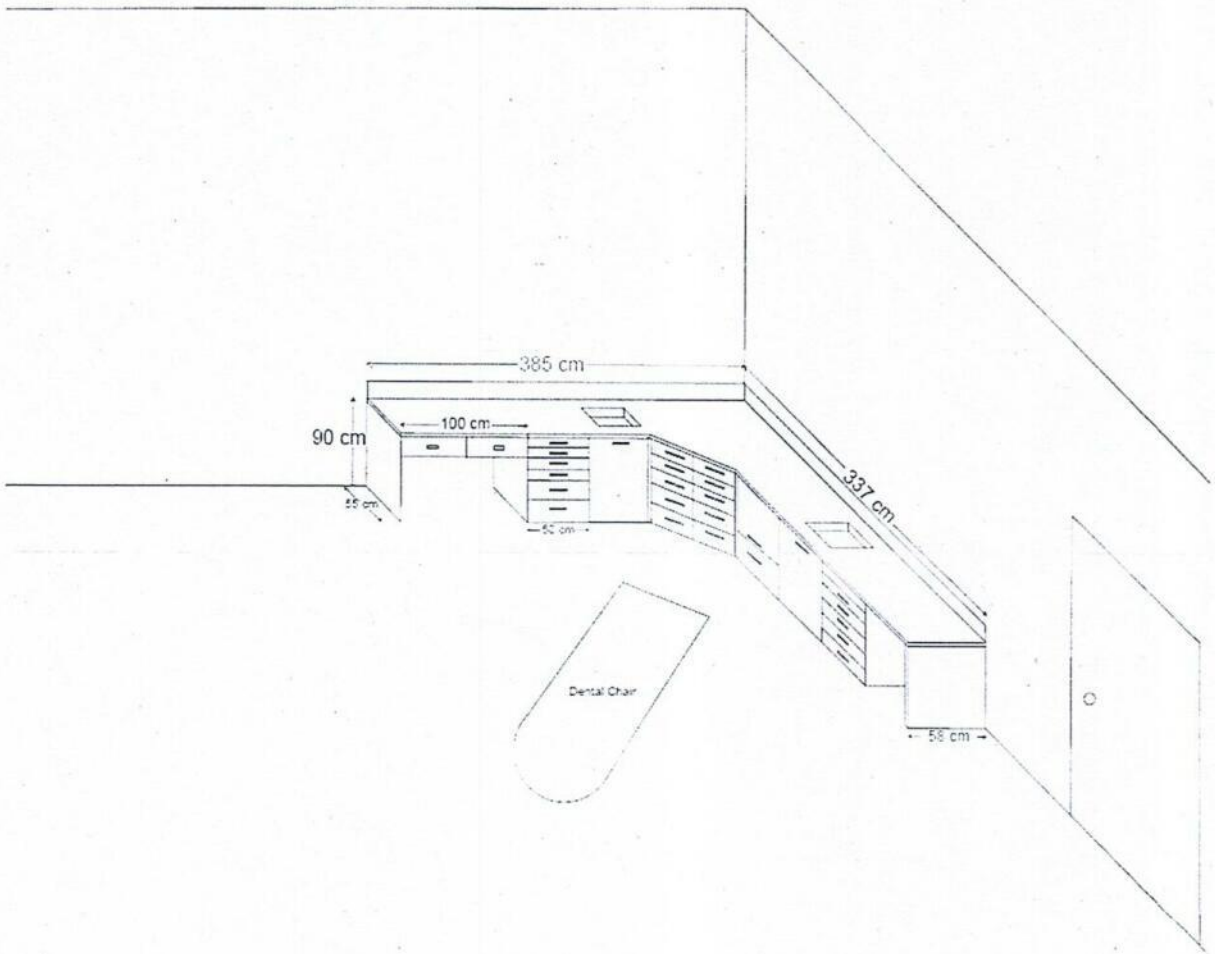




Picture is for illustration and reference only, Supplier to check module and to measure on site

| | |
|---|--|
| Dental Equipment | |
| Dental Services RBAF Demand Reference | |
| Description | Dental Suite with Cabinetry and Vinyl flooring for medium surgeries 3 and 4, New Penanjong Dental Centre |
| Quantity Required | 2 Sets |
| Preferred Model/Brand & Country Origin of The Manufacturer | Dental Suite: Kavo uniQa or Equivalent Cabinetry: KaVo Domino, Saratoga, Dental Art or Equivalent Medical Grade Homogeneous vinyl flooring: Tarkett, Armstrong or equivalent |
| Submitting Catalogue / Brochures | The Supplier must submit Catalogue / Brochures for the offered item together with tender document. |





DENTAL PENANJONG SURGERY 3 and SURGERY 4

