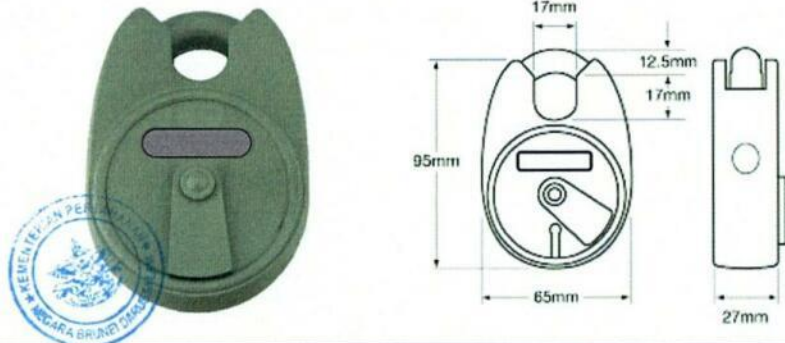


**ANNEX A - SPECIFICATION**



ITEM		PADLOCK	
QUANTITY REQUIRED		300 EA	
SER NO.	SPECIFICATION	COMPLIANCE (YES/NO)	REMARKS (TO BE COMPLETED BY TENDERER)
(a)	(b)	(e)	
1	Dimensions (mm): 95 x 65 x 27 ± Colour: Grey Material: Hardened steel Padlock Style: Keyed Padlock Padlock Function: Closed Shackle <ul style="list-style-type: none"> <li>• Shackle type – Close</li> <li>• Shackle Material – Hardened steel</li> <li>• Shackle Diameter – 12.5mm ±</li> <li>• Shackle Clearance – 17mm ±</li> </ul> 6 level mechanism Non-key retaining, force and torque resistant, anti-pick & anti-saw Supplied with <b>3 keys</b> Brand: UNION or equivalent		