

ANNEX A

PRICE INFORMATION SCHEDULES

SCHEDULE 1: PRICE SUMMARY AND TERMS OF PAYMENT

Tenderers shall set out in this Schedule:

1. **Price Summary** including the breakdown of the overall Tender Price stated in the Tender Form and any other terms of payment. The breakdown shall be detailed in the following format according to the summary of items and quantities required in the Tender. The price shall include any labour charges, custom tax and with holding tax.
2. Payment will be made locally and in Brunei Dollars. Payment shall be made in accordance with the provisions in the Contract.

ITEM	DESCRIPTION	QTY	UNIT PRICE B\$	TOTAL PRICE B\$
1	COMBAT BOOTS	1100 PRS		
	SIZE: 6	380 PRS		
	SIZE: 7	380 PRS		
	SIZE: 8	180 PRS		
	SIZE: 9	160 PRS		
2	RUNNING SHOES	1100 PRS		
	SIZE: 5	20 PRS		
	SIZE: 6	380 PRS		
	SIZE: 7	380 PRS		
	SIZE: 8	230 PRS		
	SIZE: 9	70 PRS		
	SIZE: 10	20 PRS		
3	BLACK LEATHER DMS BOOTS	400 PRS		
	SIZE: 6	200 PRS		
	SIZE: 7	200 PRS		
4	BLACK HIGHLAND SHOES (BROQUE)	35 PRS		
	SIZE: 6	10 PRS		
	SIZE: 7	20 PRS		
	SIZE: 8	5 PRS		
5	BLACK GEORGE BOOTS	10 PRS		
	SIZE: 6	10 PRS		



Ministry of Defence

Project Title: PURCHASE OF ASSORTED SHOES AND BOOTS (VARIOUS SIZES) FOR GURKHA SECURITY UNIT

Project Ref: MINDEF/DFA/FY2025/GSU/TA/004

6	LADIES SHOES BLACK	10 PRS		
	SIZE: 34	1 PRS		
	SIZE: 36	3 PRS		
	SIZE: 37	5 PRS		
	SIZE: 39	1 PRS		

NOTE:

- The Government reserves the right to give PARTIAL AWARD.
- The Government may accept the whole or any item(s) of tender.
- The Price quotes need to be maintained in items of partial award.
- **SPECIFICATIONS AND CATALOGUE MUST BE SUBMITTED AND CLEARLY LABELED.**



SPECIFICATION AND REQUIREMENTS

Ser	Items	Parameter
a	COMBAT BOOTS	<p>Material: durable black leather and cordura fabric, upper toe hard</p> <p>Colour: Black</p> <p>Out sole: Direct molded sole (DMS), slip resistance and high abrasion resistance.</p> <p>Sole pattern: Black rubber panama style pattern</p> <p>Size: 6,7,8 and 9 (wide width)</p> <p>FEATURES</p> <ul style="list-style-type: none"> • eyelets lacing maintain a snug and secure fit.
b	RUNNING SHOES	<p>Material: Mono mesh upper</p> <p>Color: Black</p> <p>Size range: 5, 6,7,8,9 and 10</p> <p>Brand: any brand</p> <p>Warranty: minimum 1 year</p> <p>FEATURES</p> <ul style="list-style-type: none"> • outer sole non-slippery type. • used for sport & running activity.
c	BLACK LEATHER DMS BOOTS	<p>Material: Black Leather, upper toe hard.</p> <p>Colour: Black</p> <p>Out sole: Direct molded sole (DMS), slip resistance and high abrasion resistance.</p> <p>Size: 6 and 7 (wide width)</p> <p>Warranty: minimum 1 year</p> <ul style="list-style-type: none"> • DMS ankle Boots • Six eyelets hole • Half bellows tongue
d	BLACK HIGHLAND SHOES (BROQUE)	<p>Material: Black leather</p> <p>Color: Black</p> <p>Sole: Leather upper and stitched rubber soles</p> <p>Size range: 6,7 and 8 (wide width)</p> <p>Warranty: minimum 1 year</p>
e	BLACK GEORGE BOOTS	<p>Material: Patent Leather Glossy</p> <p>Color: Black</p> <p>Sole: stitched rubber soles</p> <p>Size range: 6 (wide width)</p> <p>Warranty: minimum 1 year</p> <ul style="list-style-type: none"> • George ankle Boots • 3 eyelets hole • Full leather lining • Leather upper • Leather sole



Ministry of Defence

Project Title: PURCHASE OF ASSORTED SHOES AND BOOTS (VARIOUS SIZES) FOR GURKHA SECURITY UNIT

Project Ref: MINDEF/DFA/FY2025/GSU/TA/004

f	LADIES SHOES BLACK	Material: Black leather shinning Color: Black Size range: EU 34,36,37 and 39 (wide width) Warranty: minimum 1 year <ul style="list-style-type: none">• 1½ inch heel
---	--------------------	--



SAMPLES

1. COMBAT BOOTS



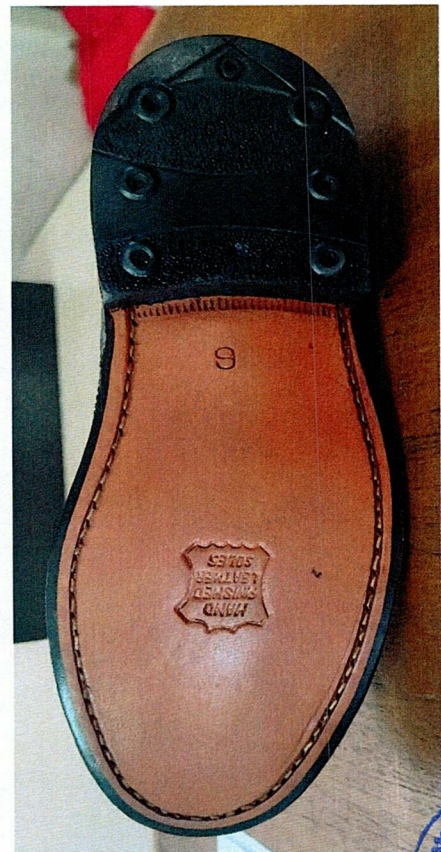
2. RUNNING SHOES



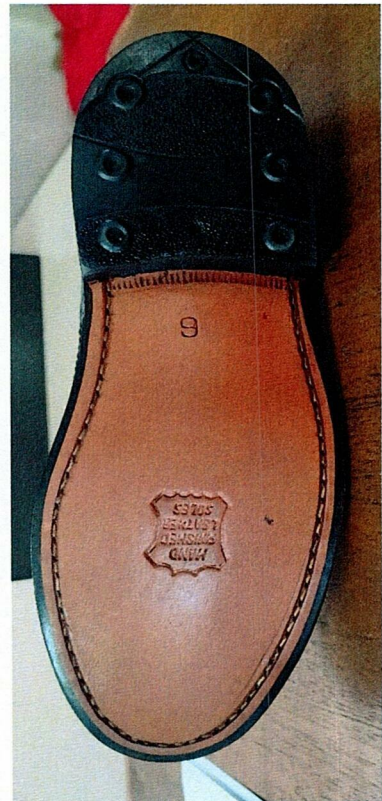
3. BLACK LEATHER DMS BOOTS



4. BLACK HIGHLAND SHOES (BROUQUE)



5. BLACK GEORGE BOOTS



6. Ladies Shoes Black



Ministry of Defence

Project Title: PURCHASE OF ASSORTED SHOES AND BOOTS (VARIOUS SIZES) FOR GURKHA SECURITY UNIT

Project Ref: MINDEF/DFA/FY2025/GSU/TA/004

